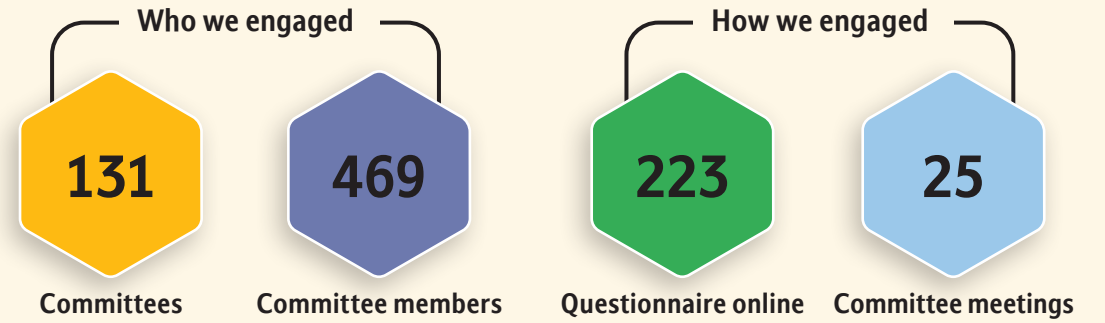


Engagement Summary

SWITCH BC is developing a Psychological Health and Safety (PHS) Toolkit for Joint Occupational Health and Safety Committees (JOHSCs) in the health sector. To inform the toolkit, staff engaged with committee members to learn how JOHSCs address PHS, the challenges they face, and what support they need. Our staff gathered feedback from JOHSC members to make sure the PHS toolkit was practical and easy to use. Further work was done with partners to align the toolkit with the CSA Standard and the B.C. health sector. The engagement period ran from July to November 2025.



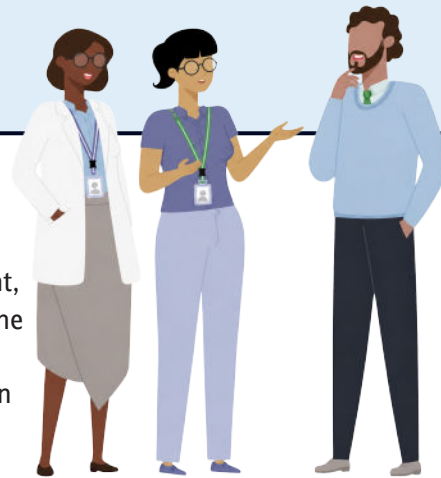
Toolkit priorities

Committees emphasized the need for resources that are short, practical, relatable, and easy to integrate into existing committee responsibilities. Priority topics included:

- Clear definitions for PHS and creating a common language.
- JOHSC roles and responsibilities related to the CSA Standard and regulatory requirements.
- Psychosocial hazards and risk identification.
- Support resources for workers who bring concerns to JOHSCs.
- Leadership support for PHS and expectations.
- Mental health supports.

Toolkit themes we heard from JOHSCs:

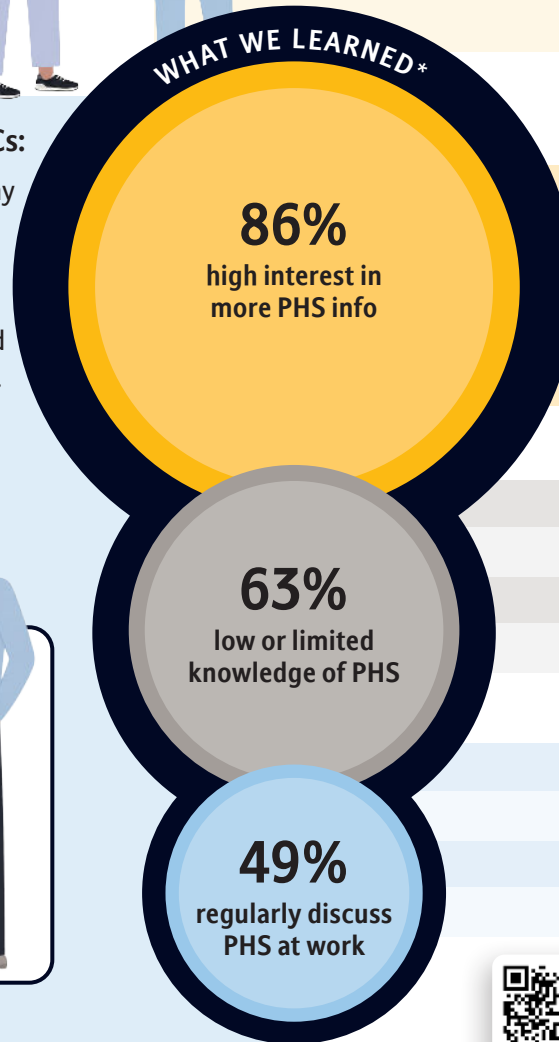
- Avoid difficult to access platforms or any platform requiring sign in to access (i.e., SharePoint).
- Make the resources mobile-friendly.
- Use visual aids such as infographics and posters with quick access via QR codes.
- Include short educational videos.
- Offer multiple formats.



Meet the PHS Characters

To bring psychological health and safety to life, we created animated health care workers: a doctor, nurse, healthcare assistant, housekeeper, paramedic, and more. Our characters try to reflect the diversity of the people doing the work and the roles. Throughout the toolkit you'll see them face real workplace challenges and learn recommendations to improve psychological health and safety.

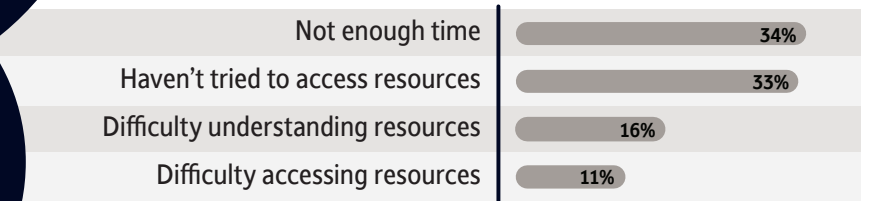
*Engagement participants work at First Nations Health Authority, Fraser Health, Interior Health, Island Health, Northern Health, Providence Health Care, Provincial Health Services Authority, and SafeCare BC.



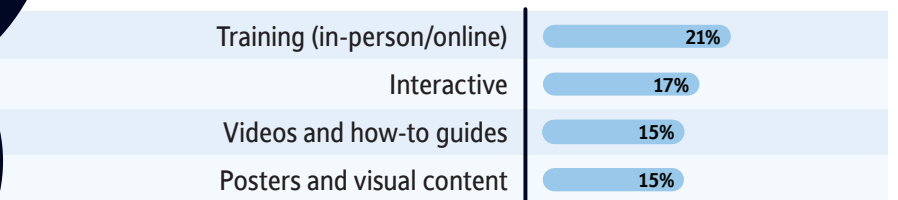
PHS topics of highest interest



Barriers to using existing PHS resources



Most requested resource formats



Visit the toolkit