

Refreshed PVPC eLearning Course Journey

Paramedic

Meet Jasmin(he/her), a Paramedic who provides direct care in a variety of workplaces, including uncontrolled environments, client homes and facilities. As Jasmin makes her way through the course, she has the ability to choose all of these scenarios. Since Jasmin uses behavioural care plans, she will receive related information.

SCENARIOS AND ADDITIONAL CONTENT

In the refreshed Provincial Violence Prevention (PVPC), all participants learn the same core skills, while having the opportunity to choose to practice those skills in scenarios that most closely apply to their role and workplace. Some participants also receive additional content. This course is designed for people in all healthcare workplaces, including hospitals and facilities, community and client homes, and long-term care.



Facility



Uncontrolled Environment



Client's Home



Long-term Care + Other Sites



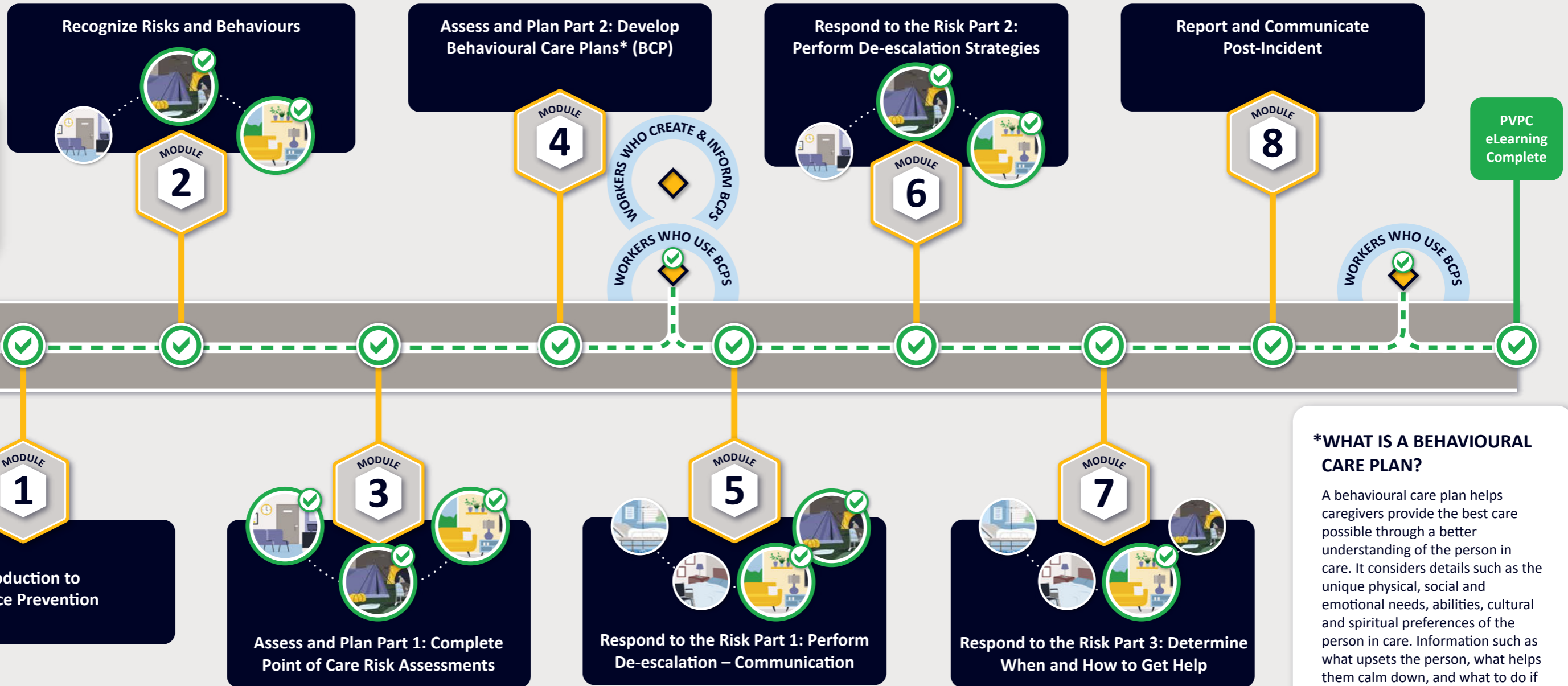
Acute Care



Additional Content



Follow Jasmin's journey through the course by looking for the green check marks next to the scenarios and additional content symbols relevant to her.



***WHAT IS A BEHAVIOURAL CARE PLAN?**

A behavioural care plan helps caregivers provide the best care possible through a better understanding of the person in care. It considers details such as the unique physical, social and emotional needs, abilities, cultural and spiritual preferences of the person in care. Information such as what upsets the person, what helps them calm down, and what to do if the person becomes too upset to calm down, is often included.